

Medical Equipment Catalogue

April 2025

Contents

Medigas Contact Information	3
Important Notes:	4
Pre-Screening Equipment Information	5
Canes	6
Walkers & Attachments	6
Rollator Walkers.....	8
Wheelchairs.....	11
Ramps.....	14
Wheelchairs Accessories	15
Seating.....	17
Transfer Aids.....	19
Patient Lift and Slings	21
Bedroom Aids	24
Therapeutic Surfaces.....	27
Bathroom Aids	29
Toileting Aids	31
Treatment Modality	35
Bariatric Equipment	39
Delivery Categories.....	43

Medigas Contact Information

Markham: Ph: 1-800-387-1517
(Central & TC) Fax: 1-705-566-4140

Milton: Ph: 1-855-350-4381
(Miss. Halton Central West) Fax: 1-888-780-2505

Barrie: Ph: 1-800-387-1517
(NSM) Fax: 1-705-792-9170

Medigas Locations

Medigas Markham
385 Bentley Street
L3R 9T2

Medigas Milton
8695 Escarpment Way, Units 1&2
L9T 0J5

Barrie
70 Ellis Drive, Unit 10
L4N 8Z3

Important Notes:

Same Day Delivery:

For equipment to be delivered on the Same Day, order must be received by the Ontario Health at Home no later than 1630 as vendor must receive it before 17:00 to ensure same day delivery.

Service Delivery Window:

Vendor will contact the Recipient to inform them of their delivery window. Vendor determines delivery window and has until 21:00 to complete the delivery of the medical equipment.

The following rental medical equipment will require a signed waiver:

- Transfer Pole

The following rental medical equipment will require set up or installation and cannot be picked up at Medigas location:

- Floor to ceiling poles
- Electric hospital beds
- All style bedrails
- Raised toilet seats, all sizes, and combinations
- Toilet safety frames
- Trapeze bar, or free standing
- Wheelchair seat belts and lap trays

Pre-Screening Equipment Information

Purpose: In order to deliver the following equipment in a timely and safe manner, the following information is required with the equipment request.

Code	Product Description	Pre-Screening Data Collection
PE8083	Transfer Pole, Tension Mounted Floor to Ceiling, Superpole with Horizontal Bar	<ul style="list-style-type: none"> - Superpole goes from 93" to 99" - Superpole extension will go from 101" to 120" - Ask what type of ceiling there is. Stucco, drop or tile ceilings are not appropriate surfaces. - Advise the client that these are tension mounted poles and client will be required to sign a waiver prior to installation as there may be some damage to the ceiling or floor. - Place a piece of tape at the install location
PE8114	Bed Assist M-Rail Handrail	<ul style="list-style-type: none"> - Ask what type of bed it is, platform, sleigh, hospital or rolling frame). Not suitable for platform bed - Ask what size of mattress (double, queen, or king) - M-Rail will not fit on a King Size bed that does not have a twin box spring* - Indicate mattress size in order notes - Ask client to remove all items from under bed prior to install
All Codes	Walkers (All Types)	<ul style="list-style-type: none"> - Please provide handle heights in the order notes for all types of walkers - Forearm attachments only fit on Type 1 walkers
All Codes	Tub Transfer Bench	<ul style="list-style-type: none"> - What type of tub do they have? How deep is it? Jacuzzi tubs are deeper and may require leg extensions. - What side are the taps located (Indicate in order notes). - Do they have shower doors across the tub entrance that may impede the installation?
PE8137	Clamp-On Rail/Bar	<ul style="list-style-type: none"> - Ask what type of tub do they have; some acrylic tubs will crack with the pressure of the clamp and may damage the tub? - Do they have shower doors across the tub entrance that may impede the installation? - Place a piece of tape at the install location

Canes

PE8000 QUAD CANE

Drive Medical – Part # 10316-4

Please specify handle height when ordering

Product weight capacity: 500lbs

- Regular handle, adjustable height
- Handle height adjusts from 30" to 39"



Walkers & Attachments

TYPE 1 WALKER FOLDING ADJUSTABLE - Standard, No Wheels

Product weight capacity: 350lbs

Please specify handle height when ordering

Overall width: 20"

- PE8015 • Junior Adjustable handle height: 25" to 32"
 - Drive Medical – Part # 10201-4
- PE8016 • Adult Adjustable handle height: 32" to 39"
 - Drive Medical – Part # 10200-4



PE8018 SIDE / HEMI WALKER

Drive Medical – Part # 10240-1

Please specify handle height when ordering

Product weight capacity: 300lbs

- Adjustable handle height: 29.5" to 36.5"



PE8010 5" FIXED WHEELS - Pair

Drive Medical – Part # 10109

Product weight capacity: 350lbs

- Fixed wheels attach to the **front** of walkers only
- Adds 2" to handle height
- Not suitable for Bariatric walker
- Client weight not to exceed weight capacity of walker



PE8011 5" WHEELS AUTOSTOP - Pair

Drive Medical – Part # RTL10088

Product weight capacity: 300lbs

- Wheels attach to the **rear** of walker only
- Not suitable for Bariatric walker
- Client weight not to exceed weight capacity of walker


PE8009 5" SWIVEL WHEELS for Walker - Pair

Drive Medical – Part # 10115*

Product weight capacity: 350lbs

- Wheels attach to the **front** of walker only
- Not suitable for Bariatric walker
- Client weight not to exceed weight capacity of walker


PE8014 WALKER GLIDES - Pair

Drive Medical – Part # 10110

- Glides attach to the rear of walker only
- Not suitable for Bariatric walker


PE8012 WALKER ATTACHMENT PLATFORM FOREARM

Drive Medical – Part # 10105-1

Please specify attachment height when ordering

Product weight capacity: 300lbs

- Forearm Attachments for Aluminum Folding Walker
- Specify side required: left, right or both
- Adjustable handgrip 12" above walker height



Rollator Walkers

TYPE 2 ADJUSTABLE ROLLATOR

Drive Medical – Part # RTL10261BL

Please specify handle height when ordering

Product weight capacity: 300lbs

Measurements:

- Overall width: 25"
- Seat dimensions: 13" (W) x 12" (D)

PE8001 ROLLATOR TYPE 2 ADJUSTABLE – Junior/Super low

- Fixed seat height: 18"
- Adjustable handle height: 29.5" to 36"

PE8002 ROLLATOR TYPE 2 ADJUSTABLE –Standard

- Fixed seat height: 21"
- Adjustable handle height: 33" to 38"



PE8003 TYPE 2 ADJUSTABLE ROLLATOR - Tall

Drive Medical – Part # 700-917

Please specify handle height when ordering

Product weight capacity: 300lbs

Measurements:

- Overall width: 25"
- Seat dimensions: 17.5" (W) x 10" (D)
- Fixed seat height: 23"
- Adjustable handle height: 33.5" to 39.5"



PE8004 TYPE 3 ADJUSTABLE ROLLATOR - Super Low

Drive Medical – Part # 700-927

Please specify handle height when ordering

Product weight capacity: 300lbs

Measurements:

- Overall width: 25"
- Seat dimensions: 17.5" (W) x 10" (D)
- Fixed seat height: 18"
- Adjustable handle height: 29.5" to 35"



PE8005 ROLLATOR TYPE 3 WALKER- Standard

Drive Medical – Part # 700-917

Please specify handle height when ordering

Product weight capacity: 300lbs

Measurements:

- Overall width: 25"
- Seat dimensions: 17.5" (W) x 10" (D)
- Fixed seat height: 23"
- Adjustable handle height: 33.5" to 39.5"


PE8006 TYPE 3 ADJUSTABLE ROLLATOR - Tall

Drive Medical – Part # RTL10266-T

Please specify handle height when ordering

Product weight capacity: 300lbs

Measurements:

- Overall width: 23"
- Seat dimensions 18" (W) x 8.5" (D)
- Fixed seat height: 23.5"
- Adjustable handle height: 36" to 41"


PE8019 HIGH PADDED PLATFORM WALKER

Power Plus Mobility – Part # WALKABT

Please specify handle height when ordering

Product weight capacity: 250lbs

Measurements:

- Adjustable handle height: 40" to 46"
- Overall width: 26"



PE8020 TYPE 3 ROLLATOR WITH FOREARM ATTACHMENT

Drive Medical – Part # UPWKRBL10

Please specify handle height when ordering

Product weight capacity: 300lbs

Measurements:

- Overall width: 26"
- Seat dimensions: 18" (W) x 10" (D)
- Fixed seat height: 21"
- Adjustable handle height: 39" to 44"
- Handle Extension Range: 4" to 6"



PE8008 OXYGEN TANK CARRIER FOR TYPE 3 ROLLATOR

Drive Medical – Part # 18102

- Opening for threading cannula on the side of the bag
- Compatibility: D Tanks while using any Drive or CHAD® conservers and regulators



PE8013 ROLLATOR SLOW DOWN BRAKES

Drive Medical – Part # 730-942

- **Only** available for Type 3 Rollator PE8004 and PE8005
- Can apply pressure to both sides, or one side to correct gait



Wheelchairs

STANDARD LIGHTWEIGHT BASIC Height Folding Wheelchair - With Swing-Away Footrests, Anti-Tippers, Flip-Back Removable Arm Rests and Seat Belt

Product weight capacity: 300lbs

Brake Extensions ordered separately if required (PE8052)

- | | |
|---------------|---|
| PE8023 | <ul style="list-style-type: none"> • 16" seat width 16" seat depth <ul style="list-style-type: none"> ○ Drive Medical – Part # CX416ADDA-ELR |
| PE8024 | <ul style="list-style-type: none"> • 18" seat width 16" seat depth <ul style="list-style-type: none"> ○ Drive Medical – Part # CX418ADDA-ELR |
| PE8025 | <ul style="list-style-type: none"> • 18" seat width 18" seat depth <ul style="list-style-type: none"> ○ Drive Medical – Part # CX418ADDA-ELR |
| PE8026 | <ul style="list-style-type: none"> • 20" seat width 16" seat depth <ul style="list-style-type: none"> ○ Drive Medical – Part #STD24ECDFASF |



Measurements:

- Seat to Floor Height: 19"

HEMI-HEIGHT LIGHTWEIGHT BASIC Folding Wheelchair - With Swing-Away Footrests, Anti-Tippers, Flip-Back Removable Arm Rests and Seat Belt

Product weight capacity: 300lbs

Brake Extensions ordered separately if required (PE8052)

- | | |
|---------------|--|
| PE8042 | <ul style="list-style-type: none"> • 16" seat width 16" seat depth <ul style="list-style-type: none"> ○ Drive Medical – Part # CX416AFASFAT |
| PE8043 | <ul style="list-style-type: none"> • 18" seat width 18" seat depth <ul style="list-style-type: none"> ○ Drive Medical – Part #CX18ADDA-ELR |
| PE8044 | <ul style="list-style-type: none"> • 20" seat width 16" seat depth <ul style="list-style-type: none"> ○ Drive Medical – Part # CX420AFASFAT |



Measurements:

- Seat to Floor Height: 17"

LIGHTWEIGHT Folding Wheelchair - With Swing-Away Footrests, Anti-Tippers, Flip-Back Removable Arm Rests

Product weight capacity: 150lbs

- PE8036**
 - 12" seat width x 12" seat depth
 - Drive Medical – Part # WB1200-2GFR
- PE8037**
 - 14" seat width x 14" seat depth
 - Drive Medical – Part # WB1400-2GJB



Measurements:

- Seat to Floor Height: 19"

HEMI-HEIGHT LIGHTWEIGHT BASIC Folding Wheelchair - With Swing-Away Footrests, Anti-Tippers, Flip-Back Removable Arm Rests and Seat Belt

Product weight capacity: 250lbs

- PE8040**
 - 12" seat width x 12" seat depth
 - Drive Medical – Part # WB1200-2GFR
 - L412DDA-SF
- PE8041**
 - 14" seat width x 14" seat depth
 - Drive Medical – Part # WB1400-2GJB,
 - L414DDA-SF



Measurements:

- Seat to Floor Height: 13.5to 15.5"

PE8035 TRANSPORT BASIC WHEELCHAIR

Drive Medical – Part # TR39E-SV

Product weight capacity: 250lbs

Measurements:

- Seat to Floor Height: 19"
- Seat dimensions: 19" (W) x 16" (D)
- Back height: 18"
- Width between arms: 17.5"
- 8" caster wheels



TILT WHEELCHAIR – Includes Headrest, Cushion, Swing-Away Footrests, Seat Belt and Calf Pads – Specify if cushion is to be removed and replaced - identify new cushion in order.
 Product weight capacity: 250lbs

- 16" seat width
 - Power Plus Mobility – Part # SUPERTPL1616
- 18" seat width
 - Power Plus Mobility – Part # SUPERTPL1818
- 20" seat width
 - Power Plus Mobility – Part # SUPERTPL2018



Elevating footrests available
 with Special Authorization
 approval only

**RECLINING STANDARD LIGHTWEIGHT FOLDING WHEELCHAIR-
 With Swing Away Elevating footrests, Anti-Tippers, Flip-Back
 Removable Arm Rests and Seat Belt**
 Product weight capacity: 250lbs

- 12" seat width 12" seat depth
 - Drive Medical – Part # PL412RBDDA
- 14" seat width 14" seat depth
 - Drive Medical – Part # PL414RBDDA



Measurements:

- Seat to Floor Height: 15" to 16"
- Backrest reclines from 90° to 180°

PEDIATRIC TILT WHEELCHAIR

Product weight capacity: 200lbs

- 12" seat width
 - Drive Medical – Part # KGP-8012-2GR
- 14" seat width
 - Drive Medical - Part # KGP-8014-2G



Measurements:

- Back Angle Range: 90° to 100°
- Tilt Angle Range: 0° to 45°
- Footrest Adjustment Range: 11.5" to 17"

Ramps

RAMP FOLDING

Product weight capacity: 600lbs

Suitable for wheelchairs and scooters

- | | |
|---------------|---|
| PE8080 | <ul style="list-style-type: none">• 6 feet long x 28.5" wide<ul style="list-style-type: none">○ Drive Medical – Part # STDS1097 |
| PE8081 | <ul style="list-style-type: none">• 8 feet long x 29.5" wide<ul style="list-style-type: none">○ Sun Rise Medical – Part # EZTRIFAS8 |
| PE8082 | <ul style="list-style-type: none">• 10 feet long x 29.5" wide<ul style="list-style-type: none">○ Sun Rise Medical – Part # EZTRIFAS10 |



Wheelchairs Accessories

ELEVATING LEG RESTS- for Folding Wheelchairs -Pair Not suitable for Transport or Recliner Chairs

- PE8046**
 - For use with 12" and 14" wheelchairs
 - Drive Medical – Part # WBELR
- PE8047**
 - For use with 16", 18", 20" wheelchairs
 - Drive Medical – Part # LK3JELR



PE8048 ADJUSTABLE TENSION WHEELCHAIR BACK

Drive Medical – Part # 14300*
Product weight capacity: 350lbs

Measurements:

- 16" to 21" adjustable
- 1" thick high density foam pad



AMPUTEE BOARD- Standard

Please specify if one or two foam stump cushion is required

- PE8049**
 - 16" Standard Size
 - Night Hawk – Part # 1180-1616
- PE8050**
 - 18" Standard Size
 - Night Hawk – Part # 1180-1818



PE8051 OXYGEN TANK HOLDER FOR WHEELCHAIR

Drive Medical – Part # STDS6008-1

Measurements:

- Bag: 28" (L) x 7.7" (W)
- Adjusted for use with "D" and "E" cylinders
- Top and bottom clasps easily attach for a secure fit to your folding wheelchair



PE8052 WHEEL BRAKE LOCK EXTENSION HANDLE - Pair

Drive Medical – Part # STDS601

- For use with Medigas wheelchair codes 8023, 8024, 8025, 8026, 8027, 8028, 8036, 8037, 8040, 8041, 8042, 8043, 8044, 8045
- Not suitable for client owned wheelchairs


PE8055 TRAY REMOVABLE- ADJUSTABLE

Please specify size required

Width Adjustable mounting brackets

- **16"** - Adjustable to 15" or 14"
 - Power Plus Mobility – Part # TRBK16-P
- **18"** -Adjustable to 17" or 16"
 - Power Plus Mobility – Part # TRBK18-P
- **20"** - Adjustable to 19" or 18"
 - Power Plus Mobility – Part #
 - TRBK20-P



NOT compatible with Tilt Wheelchairs or Reclining Wheelchairs

PE8170 PEDIATRIC - TRAY REMOVABLE

Power Plus Mobility – Part # TRBK-12 & TRBK-14

Please specify size required

- 12"
- 14"


PE8171 TRAY REMOVABLE – HALF LEFT – PADDED

Night Hawk – Part # 1135-L

PE8172 TRAY REMOVABLE – HALF RIGHT -PADDED

Night Hawk – Part # 1135-R



Seating

CUSHION PRESSURE REDISTRIBUTION SURFACE CHAIR FOAM

- with water-resistant cover

Product weight capacity: 250bs

- | | |
|---------------|---|
| PE8056 | <ul style="list-style-type: none"> • 12" (W) x 12" (D) <ul style="list-style-type: none"> ○ VitaCare – Part # VIT191412X12X3 |
| PE8057 | <ul style="list-style-type: none"> • 14" (W) x 14" (D) <ul style="list-style-type: none"> ○ Drive Medical – Part # M8061-PB |
| PE8058 | <ul style="list-style-type: none"> • 16" (W) x 16" (D) <ul style="list-style-type: none"> ○ Drive Medical – Part # M8063 |
| PE8059 | <ul style="list-style-type: none"> • 18" (W) x 16" (D) <ul style="list-style-type: none"> ○ Drive Medical – Part # M8064 |
| PE8060 | <ul style="list-style-type: none"> • 18" (W) x 18" (D) <ul style="list-style-type: none"> ○ Drive Medical – Part # 14908* |
| PE8061 | <ul style="list-style-type: none"> • 20" (W) x 16" (D) <ul style="list-style-type: none"> ○ Drive Medical – Part # M8065 |
| PE8062 | <ul style="list-style-type: none"> • 22" (W) x 18" (D) <ul style="list-style-type: none"> ○ Drive Medical – Part # M8077 |
| PE8063 | <ul style="list-style-type: none"> • 24" (W) x 20" (D) <ul style="list-style-type: none"> ○ VitaCare – Part # 191424202995* |

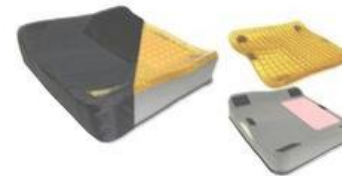


CUSHION PRESSURE REDISTRIBUTION SURFACE CHAIR GEL -

No cover available

Product weight capacity: 600lbs

- | | |
|---------------|---|
| PE8064 | <ul style="list-style-type: none"> • 12" (W) x 12" (D) <ul style="list-style-type: none"> ○ Action Products – Part # X1212 |
| PE8065 | <ul style="list-style-type: none"> • 14" (W) x 14" (D) <ul style="list-style-type: none"> ○ Action Products – Part # X1414 |
| PE8066 | <ul style="list-style-type: none"> • 16" (W) x 16" (D) <ul style="list-style-type: none"> ○ Action Products – Part # X1616 |
| PE8067 | <ul style="list-style-type: none"> • 18" (W) x 16" (D) <ul style="list-style-type: none"> ○ Action Products – Part # X1816 |
| PE8068 | <ul style="list-style-type: none"> • 18" (W) x 18" (D) <ul style="list-style-type: none"> ○ Action Products – Part # X1818 |



CUSHION PRESSURE REDISTRIBUTION SURFACE CHAIR GEL

No cover available

Product weight capacity: 600lbs

- PE8069**
 - 20" (W) x 16" (D)
 - Drive Medical – Part # 8046-4
- PE8070**
 - 22" (W) x 18" (D)
 - Drive Medical – Part # 8046-5
- PE8071**
 - 24" (W) x 20" (D)
 - Drive Medical – Part # 8046-7



AIR CUSHION HIGH PROFILE 4" - includes cover

Product weight capacity: 500lbs

- PE8072**
 - 12" (W) x 12" (D) x 4" (H)
 - Permobil – Part # 1R66C
- PE8073**
 - 14" (W) x 14" (D) x 4" (H)
 - Permobil – Part # 1R88C
- PE8074**
 - 16" (W) x 16" (D) x 4" (H)
 - Drive Medical – Part # 8047-16
- PE8075**
 - 18" (W) x 16" (D) x 4" (H)
 - Drive Medical – Part # 8047-18
- PE8076**
 - 18" (W) x 18" (D) x 4" (H)
 - Drive Medical – Part # 8047-1818
- PE8077**
 - 20" (W) x 16" (D) x 4" (H)
 - Drive Medical – Part # 8047-20
- PE8078**
 - 22" (W) x 18" (D) x 4" (H)
 - Drive Medical – Part # 8047-2218
- PE8079**
 - 24" (W) x 20" (D) x 4" (H)
 - Permobil – Part # 1R1311C



Transfer Aids

PE8108 TRAPEZE BAR - Clamp On
Drive Medical – Part # 13009TRAPBV
Product weight capacity: 250lbs

- Mounts easily to metal frame headboards and fits most manufacturers



PE8109 TRAPEZE BAR - Freestanding
Drive Medical – Part # 13049SV
Product weight capacity: 650lbs

- Boom length: 37"



PE8083 TRANSFER POLE - Tension Mounted Floor to Ceiling Pole with Horizontal Bar

Health Craft – Part # PSPB-S & STP-AK

Location on where to install pole must be clearly identified (i.e., tape on floor)

Product weight capacity: 300lbs

- Floor to ceiling height 93" to 99"
- This item may leave indentation or damage to the floor and ceiling.



PE8084 SUPERPOLE U FIT EXTENDER

Health Craft – Part # SP-UF

- For ceiling height 101" to 120"

PE8085 TRANSFER BOARD
Bowers Medical – Part # 0811672261
Product weight capacity: 400lbs

- Semiflexible plastic transfer board with handles
- 10" (W) x 26" (L) x 0.25" (T)



PE8086 TRANSFER DISC 15"

Parsons ADL – Part # 14A061-1
Product weight capacity: 330lbs

- Low profile with a non-slip surface top and bottom for safety.



PE8111 STANDING AND TURNING DEVICE

Parsons ADL – Part # 14A600A
Product weight capacity: 300lbs

Measurements:

- Adjustable handle from 36" to 48"
- Disk dimension 16"
- Rotates 360 degrees



PE8112 SIT TO STAND MANUAL TRANSFER LIFT

Arjo Huntleigh – Part # NTB2000
Product weight capacity: 400lbs

Measurements:

- Base clearance: 4.5"
- Overall width: 34" (open) 19" (closed)
- Turning radius: 40.9"
- For patients 4'11" to 6'6" tall



PE8173 TRANSFER BELT - Small

Sunnyfield – Part # 2000S

- Adjustable length 22" to 34"

PE8087 TRANSFER BELT - Medium

Drive Medical – Part # RTL6292*

- Adjustable length 30" to 40"



PE8088 TRANSFER BELT - Large

Sunnyfield - Part #2000L

- Adjustable length 32" to 52"

Patient Lift and Slings

PE8107 ELECTRIC LIFT SIT TO STAND WITH MEDIUM SLING

Drive Medical – Part # 13246 & 13263E

Product weight capacity: 400lbs

Measurements:

- Base Clearance: 4.5"
- Overall width: 40" (open) 24.5" (closed)
- Boom height: 26" to 81"



PE8089 LIFT ELECTRIC

Drive Medical – Part # 13240*

Product weight capacity: 450lbs

Measurements:

- Base clearance: 2 "
- Overall width: 41.5" (open) 25" (closed)
- Boom height: 27.5" to 76"
- Casters 5" rear
- Requires 4.5" clearance under bed
- Slings ordered separately



PE8110 DIGITAL PATIENT LIFT SCALE

Drive Medical – Part # 13046-HD

Product weight capacity: 600lbs

- Only to be used with PE8089
- Determines the weight of a person suspended from a portable patient lift mechanism



SLING FULL BODY WITH COMMODE

Aperture for toileting without removing sling

	Size	Manufacturer Part #	Measurements
PE8177	Pediatric	Joerns – Part # 70058	Weight capacity: 75 -150lbs Dimensions: 24" (L) x 33" (W)
PE8091	Small	Joerns – Part # 70058*	Weight capacity: 75-150lbs Dimensions: 33" (L) x 24" (W)
PE8092	Medium	Drive Medical – Part # 13221M	Weight capacity: 600lbs Dimensions: 53" (L) x 42" (W)
PE8093	Large	Drive Medical – Part # 13221L	Weight capacity: 600lbs Dimensions: 58" (L) x 45" (W)
PE8094	Extra Large	Drive Medical – Part # 13221XL	Weight capacity: 600lbs Dimensions: 60" (L) x 44" (W)



SLING DIVIDED LEG WITH HEADREST

	Size	Manufacturer Part #	Measurements
PE8178	Pediatric	Joerns – Part # NA1067	Weight capacity: 35-100lbs Dimensions: 40" (L) x 20" (W)
PE8095	Small	Joerns – Part # 70013*	Weight capacity: 75-150lbs Dimensions 46" (L) x 29" (W)
PE8096	Medium	Joerns – Part # 70012*	Weight capacity: 125-200lbs Dimensions 52" (L) x 33" (W)
PE8097	Large	Joerns – Part # 70011*	Weight capacity: 175-350lbs Dimensions 59" (L) x 38" (W)
PE8098	Extra Large	Joerns – Part #70010*	Weight capacity: 275-500lbs Dimensions 61" (L) x 45" (W)



SLING DIVIDED LEG WITHOUT HEADREST

	Size	Manufacturer Part #	Measurements
PE8179	Pediatric	Joerns – Part # NA1002P	Weight capacity: 35-100lbs Dimensions: 25" (L) x 23" (W)
PE8099	Small	Joerns – Part # 70003*	Weight capacity: 75-150lbs Dimensions: 61" (L) x 45.5" (W)
PE8100	Medium	Drive Medical – Part # 13262M	Weight capacity: 450lbs Dimensions: 62" (L) x 39" (W)
PE8101	Large	Drive Medical – Part # 13262L	Weight capacity: 450lbs Dimensions: 63" (L) x 44" (W)
PE8102	Extra Large	Joerns – Part # 70000*	Weight capacity: 275-500lbs Dimensions: 61" (L) x 45.5" (W)



SLING HYGIENE

U sling-4- or 6-point cradle with head support straps

	Size	Manufacturer Part #	Measurements
PE8180	Pediatric	Joerns – Part # NA1600	Weight capacity: 35-100lbs Dimensions: 29" (L) x 27.5" (W)
PE8103	Small	Drive Medical – Part # 13220S	Weight capacity: 450lbs Dimensions: 44" (L) x 35" (W)
PE8104	Medium	Drive Medical – Part # 13220M	Weight capacity: 450lbs Dimensions: 49" (L) x 37" (W)
PE8105	Large	Drive Medical – Part # 13220L	Weight capacity: 450lbs Dimensions: 54" (L) x 46" (W)
PE8106	Extra Large	Drive Medical – Part # 13220XL	Weight capacity: 450lbs Dimensions: 58" (L) x 49" (W)



Bedroom Aids

PE8118 36" ELECTRIC HOSPITAL BED PACKAGE

Drive Medical – Part # 15005LP-HRPKG-TS

Patient weight capacity: 350lbs Total weight capacity: 450lbs

- Mattress ordered separately
- Dimensions : 36"(W) x 88"(L)



HOSPITAL BED STANDARD EXTENDER

PE8119 Drive Medical – Part # 15005EXTKITL & 3835-4

- **Only** for use with Medigas 36" Electric Hospital Bed PE8118
- Adds 4" to length of bed
- Comes with foam insert and vinyl cover



PE8175 PARTIAL HOSPITAL BED RAIL - Pair

Drive Medical – Part # 15201BV



HALO SIDE BED WING- Not suitable for patient owned beds

Adjustable up to 42"

A solid steel locking mechanism allows 360° rotation to assist users with a variety of grips and offer support during transfers

- PE8115**
- Single-sided Halo Safety Wing for hospital beds

- Permobil – Part # 77701

- PE8116**
- Double-sided Halo Safety Wing for hospital beds

- Permobil – Part # 77702



PE8120 BED ASSIST RAIL 3 POSITION FOR ELECTRIC HOSPITAL BED- Pair

Invacare – Part # 6632

Adjusts to 3 positions
Quick release button

Measurements:

- Rail length: 27"
- Width between rails: 36"
- Rail height above deck raised: 14.5"



PE8113 RAISED BLOCKS WITH UNIVERSAL HOLES - Pair

Drive Medical – Part # 6299

Product weight capacity: 500lbs per block

- Adjustable with inserts to raise up the risers from 3" to 6"
- Risers have a 4" wide cut out for furniture legs



PE8114 BED ASSIST - MRAIL

Drive Medical – Part # 1222P

Product weight capacity: 300lbs

- 18" Height
- Fits a twin, double or queen size box spring.
- Suitable for home style beds with box springs
- Cannot be platform support based. Strapping must be able to run across the base/bed frame and underneath, back to the M-Rail
- The mattress must be tight against the assistive handrail, with no gaps at all times. This should be checked frequently- at least daily



PE8117 PIVOTING BED ASSIST RAIL - CLAMP ON

Health Craft – Part # SR-S

Product weight capacity: 300lbs

- The Smart-Rail is installed between the mattress and box spring and is secured in place with a safety strap. In the closed position, the Smart-Rail is height adjustable to accommodate the thickness of the mattress. In the opened position, the Smart-Rail is height adjustable to accommodate the height of the user



PE8122 BED CRADLE

Parsons ADL – Part # 16H193A-2

Bed blanket support eliminates the weight of blankets on feet and ankles. Tucks easily under the mattress.

Measurements:

- 15"(H) x 19" (W) x 10" (D)



Therapeutic Surfaces

PE8123 NON-POWERED AIR OVERLAY SECTIONS - 3 Section Overlay

Must be ordered with PE8124

Permobil – Part # 3400*

Will be inflated to medium fullness by equipment provider.

Trained provider (e.g., OT, PT) follow-up is required to ensure correct inflation.

Note: Overlays are not intended to replace a mattress but rather to be placed on top of a bed mattress.

Includes:

- Three overlay sections, each 34" (W) x 20" (L)
- Hand pump to adjust inflation level

PE8124

LEVELING PAD - FOAM INSERT-

Must be ordered with PE8123 -Please specify placement of leveling pad.

Permobil – Part # RLP2134-10

- Foam head pad – 34" (W) x 20" (L)



PE8125 OVERLAY, FOAM/GEL

Drive Medical – Part # 14893*

Product weight capacity: 300lbs

Note: Overlays are not intended to replace a mattress but rather to be placed on top of a bed mattress.

Measurements:

- 34" (W) x 76" (L) x 3.5" (H)



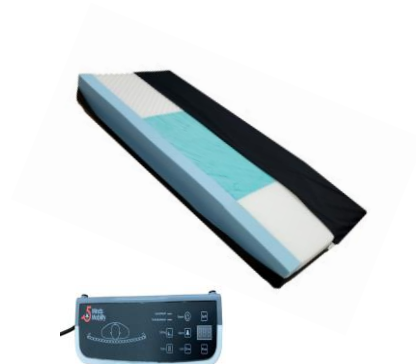
PE8126 ACTIVE MULTI-ZONE MATTRESS WITH ALTERNATING PRESSURE – POWERED

Permobil – Part #ATL3580 & ATLHYPUMP

Product weight capacity: 500lbs

Measurements:

- 35" (W) x 80" (L) x 7" (H)
- 4" wide firm borders for safe transfers



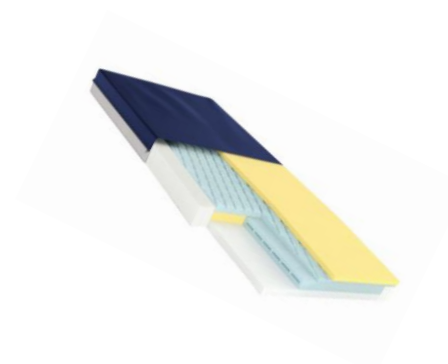
PE8128 STANDARD HIGH DENSITY FOAM MATTRESS

Drive Medical – Part # 15970*

Product weight capacity: 450lbs

Measurements:

- 36"(W) x 80"(L) x 6"(H)

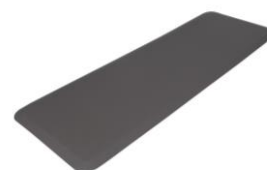


PE8130 FALL MATS

Drive Medical – Part # PM20GA

Measurements:

- 24"(W) x 70"(L) x 0.75"(H)



Bathroom Aids

PE8131 BATH BOARD – Plastic

Drive Medical – Part # 770-420

Product weight capacity: 330lbs

Measurements:

- 14.5" (W) x 30.5" (L)
- Fits bathtub inner widths between 16" and 26 ¾"



PE8132 BATH SEAT ADJUSTABLE WITH REMOVABLE BACK

Drive Medical – Part # 12202KD-4

Product weight capacity: 300lbs

Measurements:

- Seat dimensions: 19.25" (W) x 11.5" (D)
- Adjustable height 16" to 21"
- Outside Legs: 19.5" (W) x 19.5" (D)



PE8134 BATH STOOL

Drive Medical – Part # RTL12004KD

Product weight capacity: 300lbs

Measurements:

- Seat dimensions 13" (W) x 13" (D)
- Adjustable height 13.5" to 21"



PE8181 PEDIATRIC BATH CHAIR WITH ADJUSTABLE BACKREST – SMALL

Drive Medical – Part # OT1000

Product weight capacity: 60lbs

Measurements:

- User Height: up to 36"
- Back Height: 18"
- Adjustable slip-resistant legs raise chair up to 7"



PE8135 TUB TRANSFER BENCH REGULAR- Unpadded

Drive Medical – Part # 12011KD-1

Specify Taps on Left or Right

Product weight capacity: 400lbs

Measurements:

- Seat dimensions: 26" (W) x 18.5" (H) x 19.5" (D)
- Adjustable height: 17.5" to 22.5"
- Outside legs approximately 32" (W) x 23"(D)



PE8137 CLAMP-ON TUB RAIL/BAR

Drive Medical – Part #RTL12036-ADJ

Clearly identify where to install the tub bar (i.e., tape on tub)

Product weight capacity: 300lbs

Measurements:

- Adjustable height 14.5" to 17"
- Adjustable width from 3" to 7"
- Not for use with fiberglass tubs



Toileting Aids

PE8138 RAISED TOILET SEAT- WITH ARMS- Adjustable Regular

Drive Medical – Part #RTL12C002-WH

Specify seat height required

Product weight capacity: 350lbs

- Accommodates three different seat heights (2", 4" and 6")
- Pivoting armrests can be raised out of the way
- Fits comfortably on most standard and elongated toilets



PE8139 RAISED TOILET SEAT- WITHOUT ARMS- Heavy Duty

Compass Health – Part # B313-00

Product weight capacity: 500lbs

Measurements:

- Dimensions: 4.25 (H) x 16.5 (W) x 16.63 (D)
- The Safe Lock system ensures safe use and easy installation



PE8140 TOILET ARMS-FREE STANDING

Drive Medical – Part # RTL12079

Product weight capacity: 300lbs

Measurements:

- Overall width: 26.5"
- Width between arms: 21"
- Free standing around toilet
- Fits standard and elongated toilets



PE8141 TOILET ARMS-MOUNTED

Drive Medical – Part # 12001-4

Product weight capacity: 300lbs

Measurements:

- Overall width: 21.5" to 24.5"
- Width between arms: 18" to 21"
- Adjustable height
- Must be able to remove existing toilet seat bolts to install



PE8142 TOILET SEAT 3.5" ELEVATOR – Regular

Drive Medical – Part # RTL12607

Product weight capacity: 250lbs

- Must be able to safely remove existing toilet seat bolts to install

Measurements:

- 13.5" (W) x 17.5" (D) x 3.5" (H)



PE8143 TOILET SEAT 3.5" ELEVATOR – Elongated

Drive Medical – Part # RTL12608

Product weight capacity: 250lbs

- Must be able to safely remove existing toilet seat bolts to install

Measurements:

- 14" (W) x 19.25" (D) x 3.5" (H)



PE8144 COMMODE – OVER THE TOILET-STATIONARY UNPADDED [FIXED ARMS]

Drive Medical – Part # 11105N-4

Product weight capacity: 350lbs

- Comes with commode bucket and splash shield

Measurements:

- Adjustable height: 16" to 21.5"
- Width between arms: 18"
- Width outside arms: 22"
- Dimensions: 14" (W) x 16.5" (D)



PE8146 COMMODE - STATIONARY DROP ARMS

Drive Medical – Part # 11125KD-1

Will not fit over toilet

Product weight capacity: 300lbs

- Comes with commode bucket and splash shield

Measurements:

- Adjustable height: 20" to 24"
- Width between arms: 19.75"
- Seat dimensions: 13.75" (W) x 16.5" (D)



PE8145 PEDIATRIC COMMODE - FIXED ARMS

Drive Medical – Part # PC1000BL

Product weight capacity: 250lbs

- Comes with commode bucket and splash shield

Measurements:

- Adjustable height: 10.5" to 14.5"
- Width between arms: 13"
- Dimensions: 14" (W) x 16.5" (D)



PE8148 COMMODE - WHEELED-With Flip up armrests

AMG Medical Inc. – Product # 770-375

Product weight capacity: 275lbs

- Comes with commode bucket and splash shield
- Removable, swing away footrests with heel strap

Measurements:

- Fixed Seat height: 22", Width between arms: 18"
- Total width approximately: 23"



PE8182 PEDIATRIC WHEELED COMMODE WITH SECUREMENT STRAP

Performance Health – Part # 081172568

Product weight capacity: 300lbs

- Comes with commode bucket

Measurements:

- Seat to Floor Height: 21"
- Width between arms: 15"
- Seat to Arm Height: 7"
- Seat dimensions: 14" (W) x 14 ½ "(D)



Treatment Modality

PE8150 TENS MACHINE

AMG Medical Inc. – Part # 715-430

AMG Medical Inc. – Part # 715-715

AMG Medical Inc. – Part # 715-530

- Comes with one set of supplies (electrodes and lead wires)
 - 2"x 2" electrodes (qty 4)
 - Lead wires (qty 2)



PE8151 MEDICATION NEBULIZER COMPRESSOR (Supplies ordered separately)

Drive Medical – Part # 3655LT

- A/C powered for providing aerosol medication treatments.
- Electrical requirements 1.2 amps, 120 V~ 60 Hz

Supplies ordered as each

Item Code	Manufacturer Part #	Item Description
PE8152	Hudson -Part # 1705	Nebulizer Kit – Adult
PE8153	Hudson-Part #1705	Nebulizer Kit – Pediatric



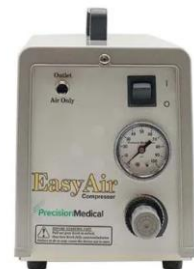
PE8154 COMPRESSOR HUMIDITY (Supplies ordered separately)

KEGO Medical - Part # PM-15P

- A/C powered for use in providing continuous humidity for trach clients.

Supplies ordered as each.

Item Code	Manufacturer Part #	Item Description
PE8155	Hudson – Part # 1075	Humidity Compressor Kit – Adult trach mask
PE8156	Hudson – Part # 1076	Humidity Compressor Kit – Pediatric trach mask
PE8163	Cardinal Health Canada Part # BCD002002	Airlife Nebulizer Bottle 350ml
PS4177	Vyaire Medical Part # 001400	6ft Aerosol Corrugated Tubing
PS4393	Mckesson – Part #158780	Distilled Water 4L
PS4390	Hudson – Part # 1075	Tracheostomy Mask, with Snap – Adult
PS4392	Medline Part # HCS4621B	Tracheostomy Mask - Pediatric



PE8157 SUCTION MACHINE - RESPIRATORY

Drive Medical –Part # 7325P-D

Operating Humidity Range: 15-93% non-condensing

Vacuum Range: 50-550mm Hg+/-5%

Airway suctioning removes oral and respiratory secretions.

- Includes (1) collection bottle, (1) hydrophobic bacteria filter, (1) 6ft tubing.
- Order Yankauer Suction Tips or Suction Catheters Separately (see below)

Supplies ordered as each.

Item Code	Manufacturer Part #	Description
PE8158	Sunset Healthcare Part # RES026S-E	Respiratory Suction Kit – Adult
PE8159	Sunset Healthcare Part # RES026S-E	Respiratory Suction Kit – Pediatric
PE8164	Drive Medical Part #22330	Suction Canister Assembly and 6ft Tube Kit
PS4192	Canadian Hospital Specialties Part # 50-1008	8FR Suction Catheter Straight 1cm Calibrated, Control Valve
PS4191	Canadian Hospital Specialties Part # 50-1010	10FR Suction Catheter Straight 1cm Calibrated, Control Valve
PS4189	Canadian Hospital Specialties Part # 52-2012	12FR Suction Catheter Coude Tip, Control Valve
PS4394	Canadian Hospital Specialties Part # 52-2014	14 FR Suction Catheter Coude Tip, Control Valve
PS4190	Canadian Hospital Specialties Part # 70-8072	6' Connecting tubing for suction catheters
PS4193	Drive Medical Part # 30-3064	Yankauer Suction Handle with Bulb Tip, No control vent



PE8160 SUCTION MACHINE - GASTRIC ASPIRATOR

Allied Health – Part # 01-22-0270

- A/C Powered
- Single-use collection bottle & connecting tubing included.
- Used for Gastric G-Tube suctioning.
- **Supplies are ordered from Ontario Health atHome Supply Vendor**

Supplies ordered as each.

Item Code	Manufacturer Part #	Description
PE8161	Part # 01902000,01903100,0 1903695	Gastric Supply Kit – Adult
PE8167	Allied Health – Part # 1903695	Collection Bottle 1200ml
PE8168	Medline – Part # 7305D-608	Bacteria Filter
PE8169	Cardinal Health Canada – Part # 70-6072	4.5” Connector Tube



Bariatric Equipment

PE8017 BARIATRIC TYPE 1 WALKER FOLDING ADJUSTABLE - Standard, No Wheels

Drive Medical – Part # 10220-1

Please specify handle height when ordering

Product weight capacity: 600lbs

Measurements:

- Overall width: 23"
- Adjustable handle height: 32" to 39"



PE8007 BARIATRIC TYPE 3 - EXTRA WIDE ADJUSTABLE ROLLATOR

Performance Health – Part # 7500348*

Please specify handle height when ordering

Product weight capacity: 700lbs

Measurements:

- Overall width: 24"
- Fixed seat height: 21 "
- Adjustable handle height: 33" to 38"



PE8147 BARIATRIC COMMUNE - STATIONARY DROP ARMS

Drive Medical – Part # 11135-1

Product weight capacity: 500lbs

- Comes with pail
- If space allows, will fit over toilet

Measurements:

- Adjustable height 17.5" to 22"
- Width between arms: 25.75"
- Seat dimensions 23.25" (W) x 18.5" (D)



COMMODE WHEELED - Bariatric With Flip Up Armrests

PE8149 Drive Medical – Part # NRS185008

Product weight capacity: 500lbs

- Comes with commode bucket and splash shield

Measurements:

- Seat to floor height: 20.5" to 22.4"
- Seat dimensions 22" (W) x 17.1" (H)



PE8133 BATH SEAT ADJUSTABLE WITH REMOVABLE BACK- Heavy Duty

Drive Medical – Part # 12021KD-1

Product weight capacity: 500lbs

Measurements:

- Seat dimensions: 20" (W) x 12" (D)
- Adjustable height: 14" to 19"
- Outside legs: 17.5" (W) x 17.25" (D)



PE8136 BARIATRIC TUB TRANSFER BENCH - Unpadded

Drive Medical – Part # 12025KD-1

Specify Taps on Left or Right

Product weight capacity: 500lbs

Measurements:

- Seat dimensions 26.5" (W) x 16.5" (D)
- Adjustable height 18" to 23.5"
- Outside legs approximately 32.5" (W) x 24" (D)



HEAVY DUTY BASIC Folding Wheelchair - With Swing-Away Footrests, Anti-Tippers, Flip-Back Removable Arm Rests and Seat Belt

Product weight capacity: 450lbs

Specify seat to floor height required

Seat to floor height 17.5" to 19.5"

PE8027 • 22" seat width 18" seat depth

○ Drive Medical – Part # STD22ECDFASF

PE8028 • 24" seat width 18" seat depth

Drive Medical – Part # STD24ECDFASF



- PE8045 HEAVY DUTY HEMI-HEIGHT BASIC Folding Wheelchair - With Swing-Away Footrests, Anti-Tippers, Flip-Back Removable Arm Rests and Seat Belt**
 Drive Medical – Part # STD26ECDFA
 Product weight capacity: 700lbs



Measurements:

- 26" seat width x 20" seat depth
- Seat to floor height: 19.5"
- Back height: 18"

- PE8034 BARIATRIC TILT WHEELCHAIR – Includes Headrest, Cushion, Swing-Away Footrests, Seat Belt and Calf Pads – Specify if cushion is to be removed and replaced – identify ROLLT in new order.**
 Power Plus – Part # SUPERTPL2220
 Product weight capacity: 600lbs



- Tilt angle 0° to 55°
- Back angle 0°, 5°, 10°, 15°

- PE8090 LIFT ELECTRIC-Bariatric**
 Drive Medical – Part # 13244
Slings ordered separately
 Product weight capacity: 600lbs



Measurements:

- Overall width: 25" (closed), 45.75" (open)
- Base clearance: 2"
- Boom height: 32" to 75.5"
- Casters 3" front, 4" rear

- PE8121 42" BARIATRIC HOSPITAL BED PACKAGE**
 Drive Medical – Part # 15300LW-HR
 Total weight capacity: 600 lbs. Includes occupant, mattress, rails, accessories, personal affects, etc.



- Mattress ordered separately
- Dimensions: 42" (W) x 88" (L)

PE8176 BARIATRIC PARTIAL HOSPITAL BED RAIL

Drive Medical – Part # 15021BV



PE8127 BARIATRIC ACTIVE MULTI-ZONE MATTRESS WITH ALTERNATING PRESSURE - POWERED

Permobil – Part # ATL4280 & ATLHYPUMP

Product weight capacity: 700lbs

Measurements:

- 42" (W) x 80" (L) x 7" (H)
- 4" wide firm borders for safe transfers



PE8129 BARIATRIC HIGH DENSITY FOAM MATTRESS

Drive Medical – Part # 15301*

Product weight capacity: 585lbs

Measurements:

- 42" (W) x 80" (L) x 6.5" (H)



Delivery Categories

*** Orders received after the cut off time will be completed on the next calendar day as per Delivery Category definition. ***

Delivery Category	Description
Non-Urgent Delivery	<p>Delivery to be completed no later than the third calendar day after the Rental Start Date defined in the equipment order (not the date the order is received by the vendor). Vendor must receive order by 17:00.</p> <p>Delivery time determined by the vendor.</p>
Next Day (Standard) Delivery	<p>Delivery to be completed no later than 21:00 on the next calendar day after the day the order is received by vendor. Vendor must receive order by 17:00.</p> <p>Delivery time determined by the vendor.</p>
Same Day Delivery	<p>Delivery to be completed no later than 21:00 on the same calendar day, if order is received by 17:00. Orders received after 17:00 will be completed on the next calendar day.</p> <p>Delivery time determined by the vendor.</p>
Urgent Delivery	<p>Delivery to be completed no later than four (4) hours after the day the order is received by vendor. Vendor must receive order by 17:00.</p> <p>Delivery time determined by the vendor.</p>
Non-Urgent Replacement Request	<p>Vendor to complete replacement request for previously ordered equipment no later than 2 days after request is made.</p> <p>All replacement requests will be deemed non urgent unless specified as urgent.</p>
Urgent Replacement Request	<p>Vendor to complete urgent replacement request for previously ordered equipment no later than no later than four (4) hours after the request is made.</p>
Recovery Request Non-Urgent (Pick Up)	<p>Barring any actions with which may impede or delay recovery of equipment, vendor to recover the medical equipment no later than 3 Business Days after receiving the request.</p>
Recovery Request Urgent (Pick Up)	<p>Barring any actions with which may impede or delay recovery of equipment, vendor is to recover the medical equipment no later than 21:00 on the same calendar day.</p> <p>*Note, a fee is associated with Urgent Recovery Requests.</p>

Medigas

385 Bentley Street, Markham, Ontario L3R 9T2

Phone 416-365-1700, www.medigas.com

Disclaimer: Medigas has no control whatsoever as regards to performance or non-performance, misinterpretation, proper or improper use of any information or suggestions by any person or any entity and Medigas expressly disclaims any liability in connection thereto. Medigas is a company name used by Linde Canada Inc. and its affiliates. Medigas and the Medigas cross design are trademarks or registered trademarks of Linde plc or its affiliates. Copyright © 2011, 2021. Linde Canada Inc.